

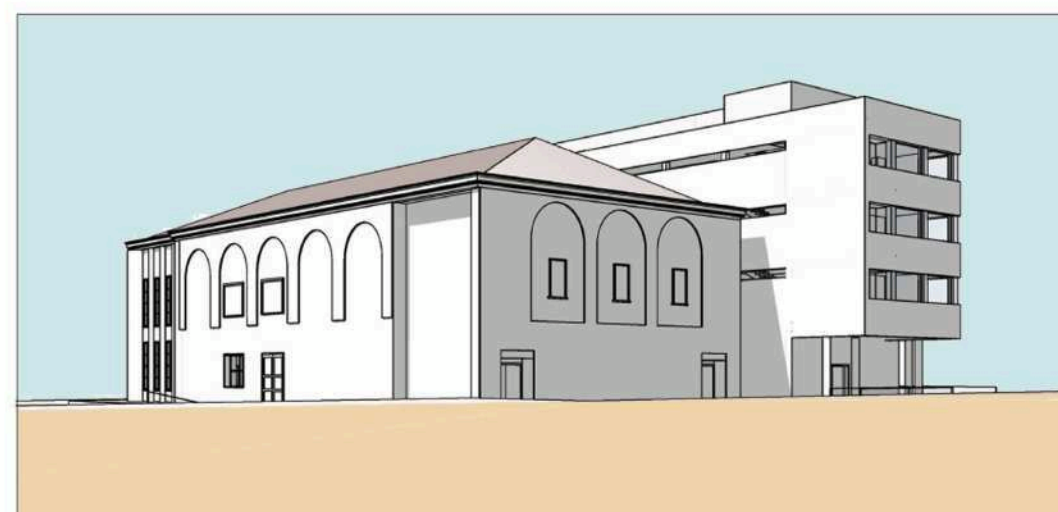
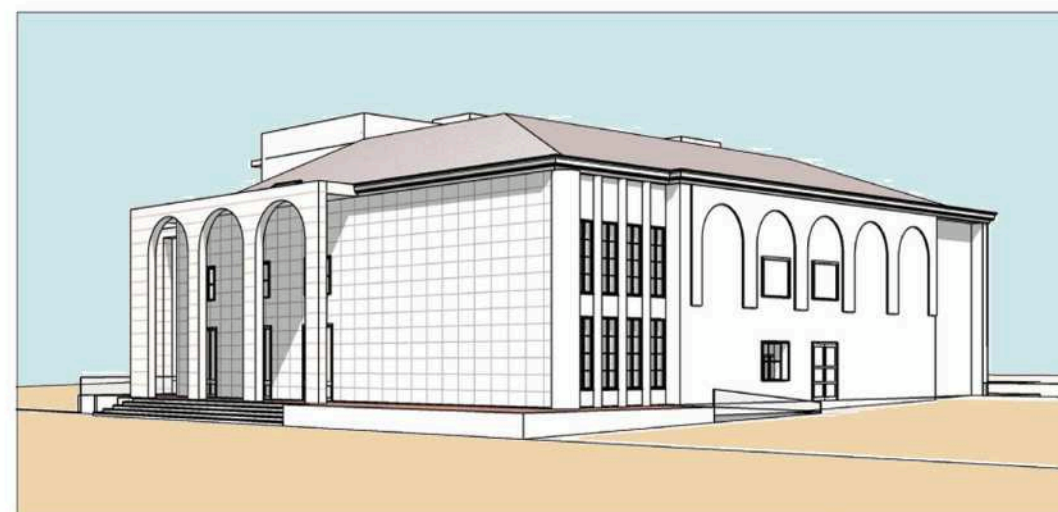


Gruppo **Tironi**

*Garanzia di qualità  
e professionalità*

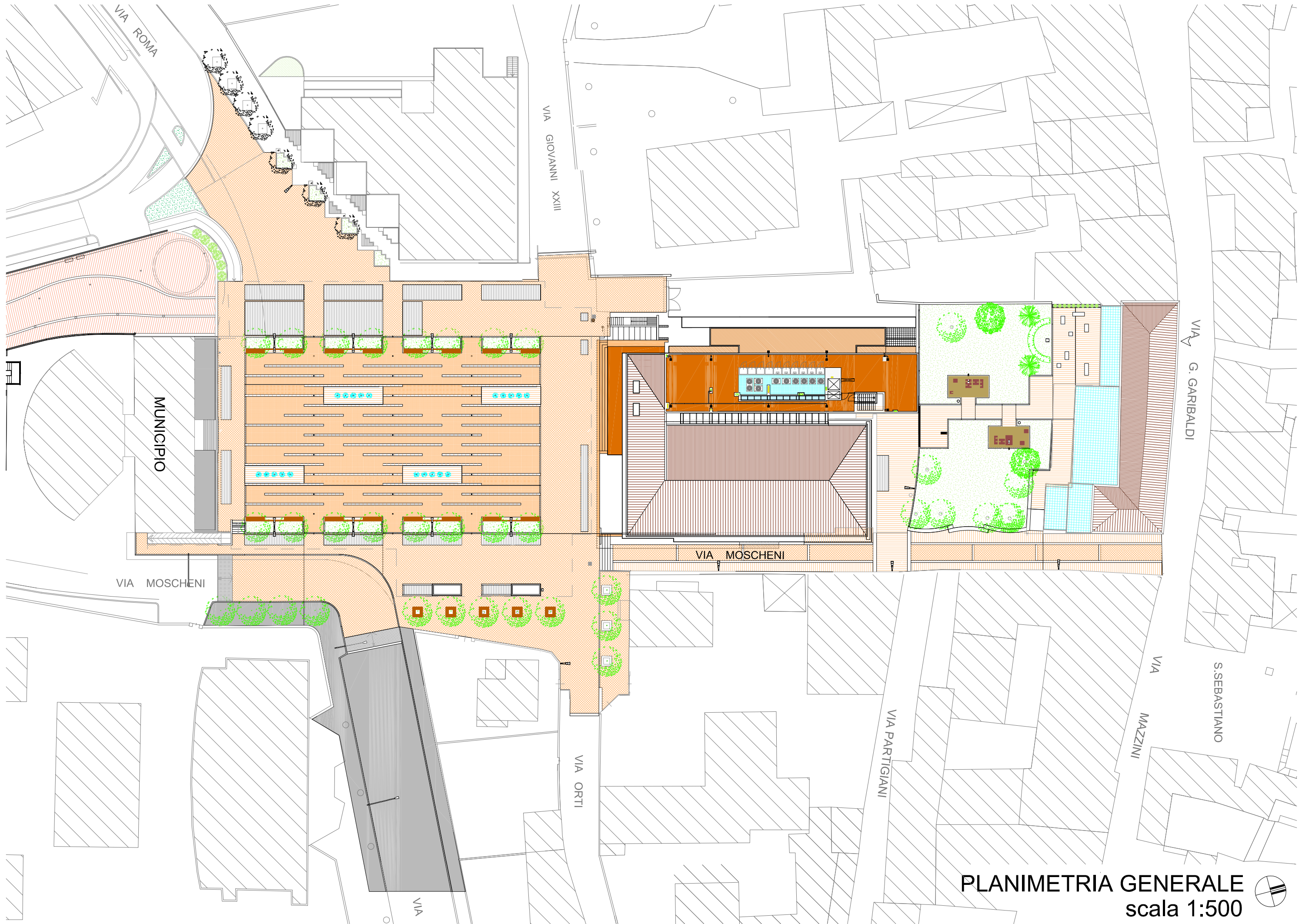
## **NEMBRO "BALILLA"**

*Nembro, P.zza Liberta', Via Moscheni*



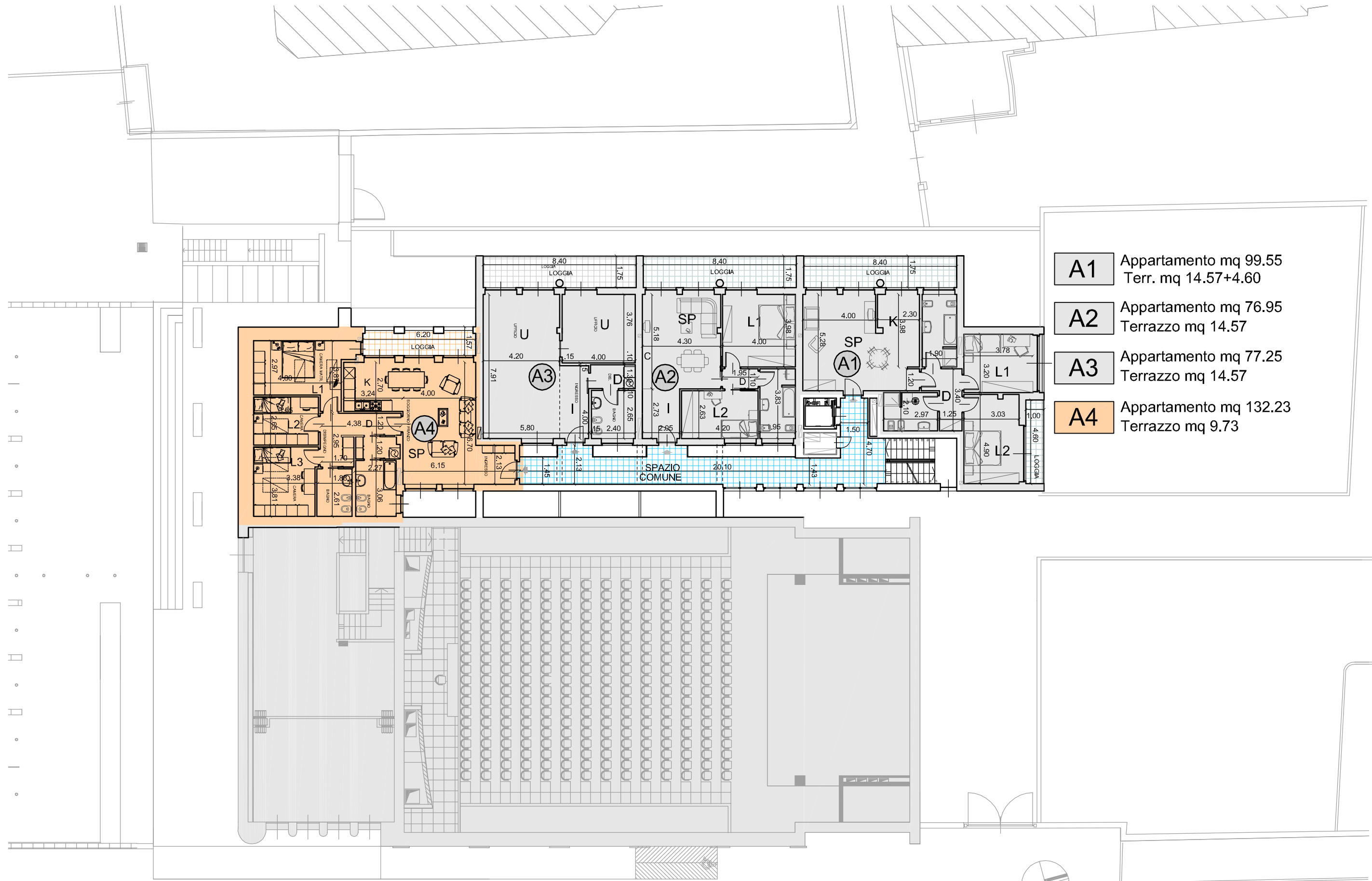
**Tel: 035.512202 • [www.gruppotironi.com](http://www.gruppotironi.com)**





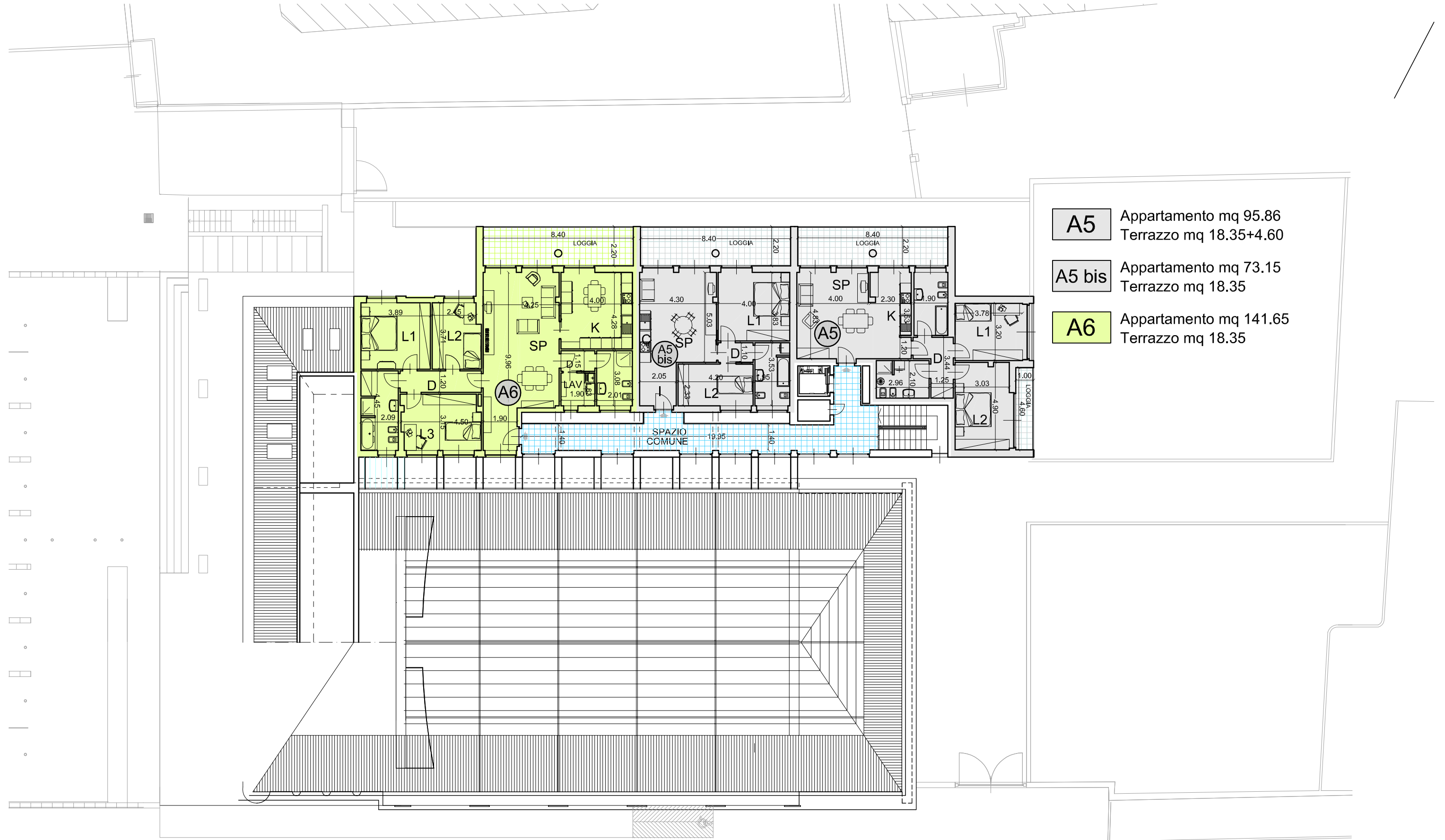
**PLANIMETRIA GENERALE**  
scala 1:500





- A1** Appartamento mq 99.55  
Terr. mq 14.57+4.60
- A2** Appartamento mq 76.95  
Terrazzo mq 14.57
- A3** Appartamento mq 77.25  
Terrazzo mq 14.57
- A4** Appartamento mq 132.23  
Terrazzo mq 9.73

**PIANTA PIANO SECONDO**  
scala 1:200



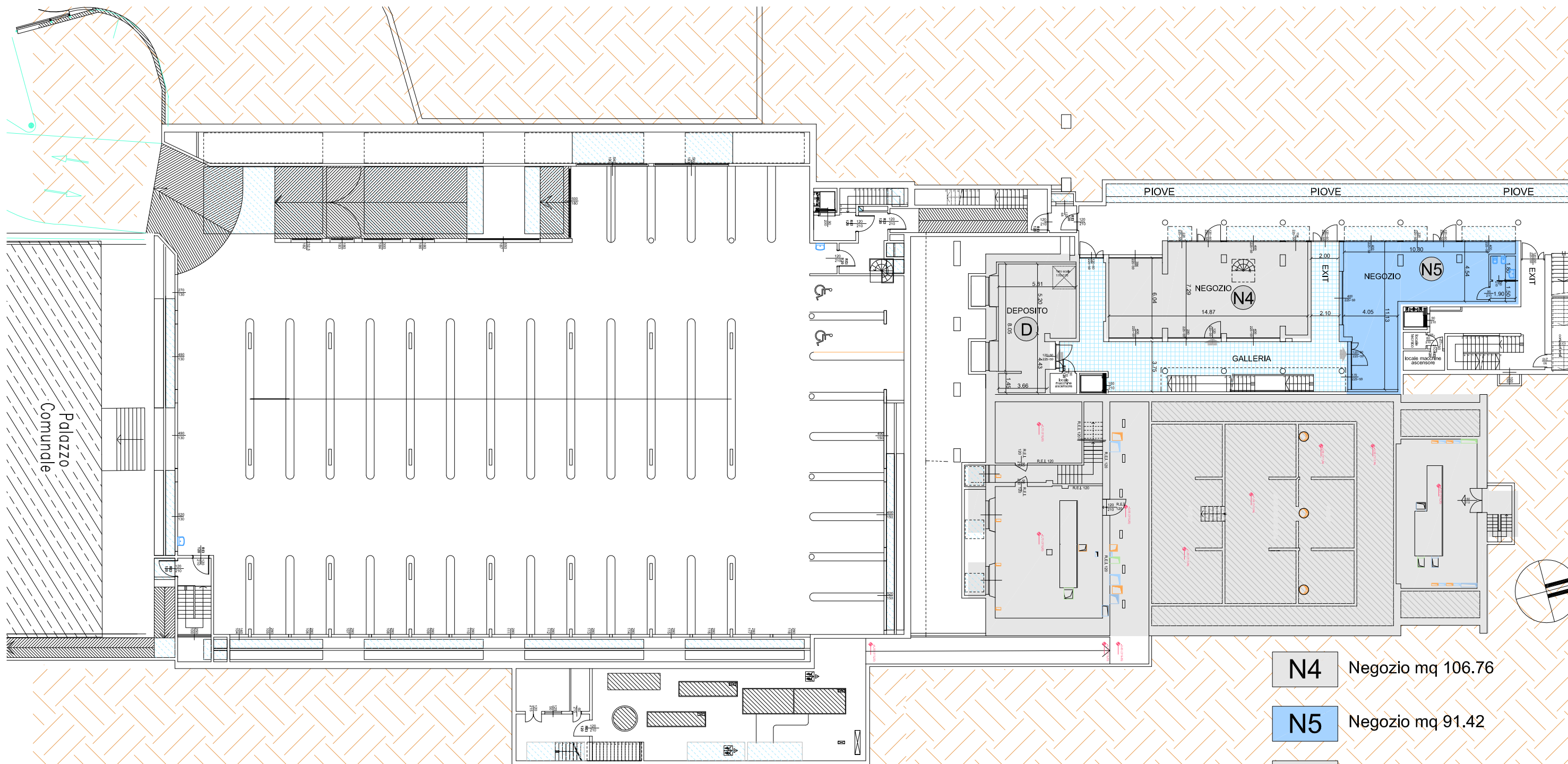
**A5** Appartamento mq 95.86  
Terrazzo mq 18.35+4.60

**A5 bis** Appartamento mq 73.15  
Terrazzo mq 18.35

**A6** Appartamento mq 141.65  
Terrazzo mq 18.35

**PIANTA PIANO TERZO**  
scala 1:200

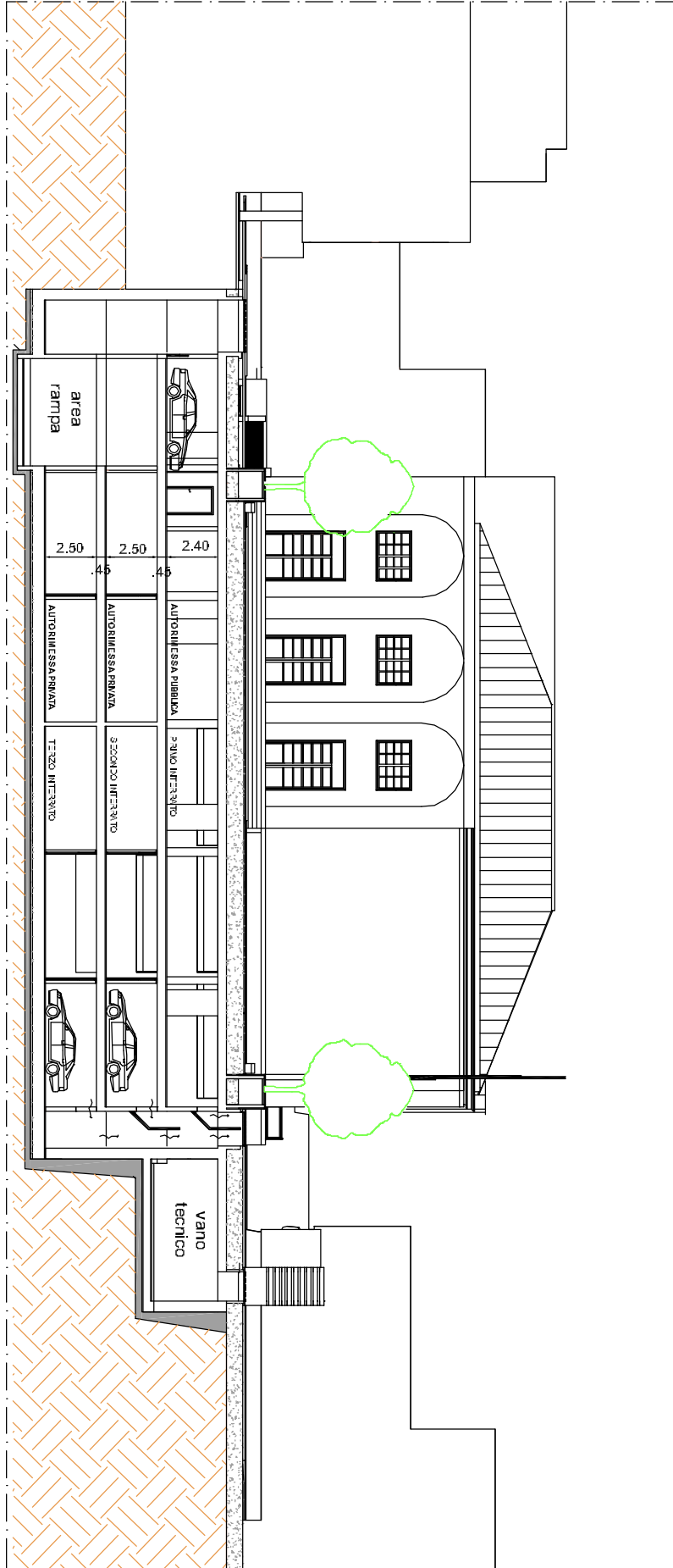




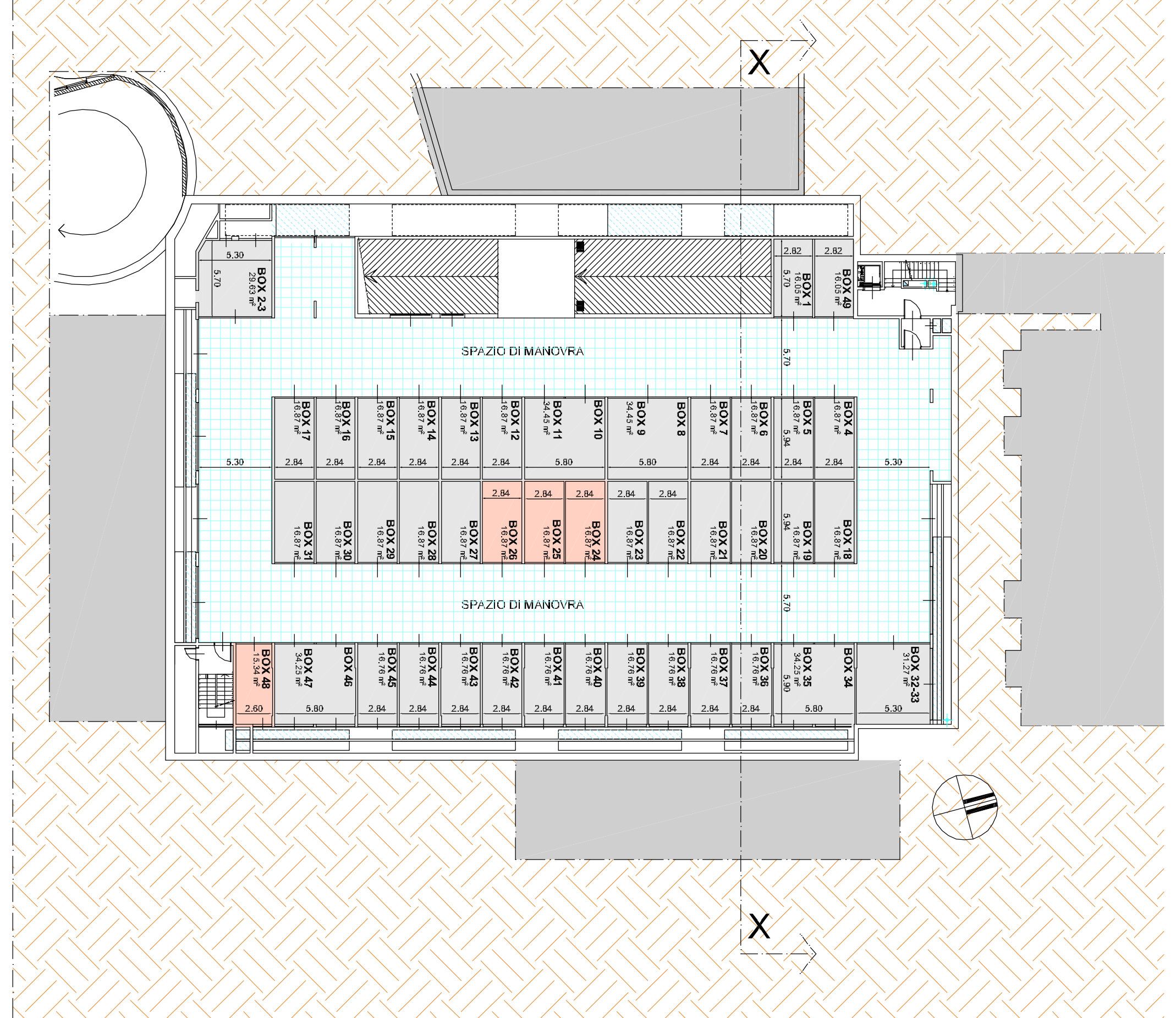
PIANTA PRIMO PIANO INTERRATO  
scala 1:300

- N4** Negozio mq 106.76
- N5** Negozio mq 91.42
- D** Deposito mq 64.35

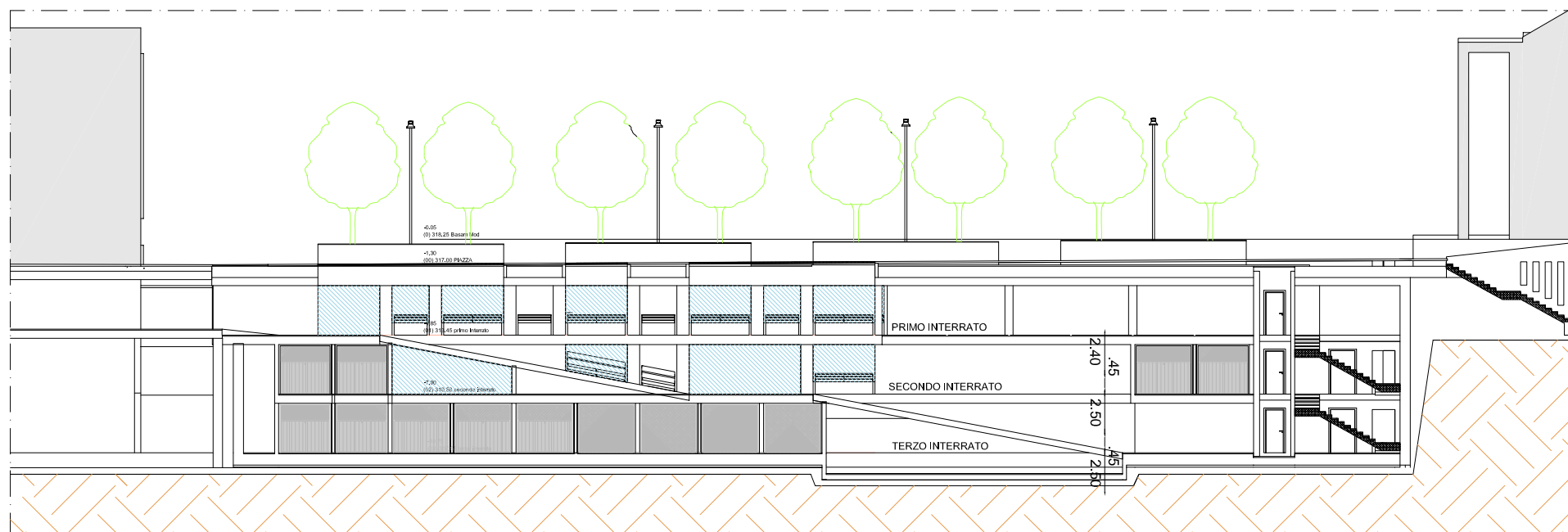
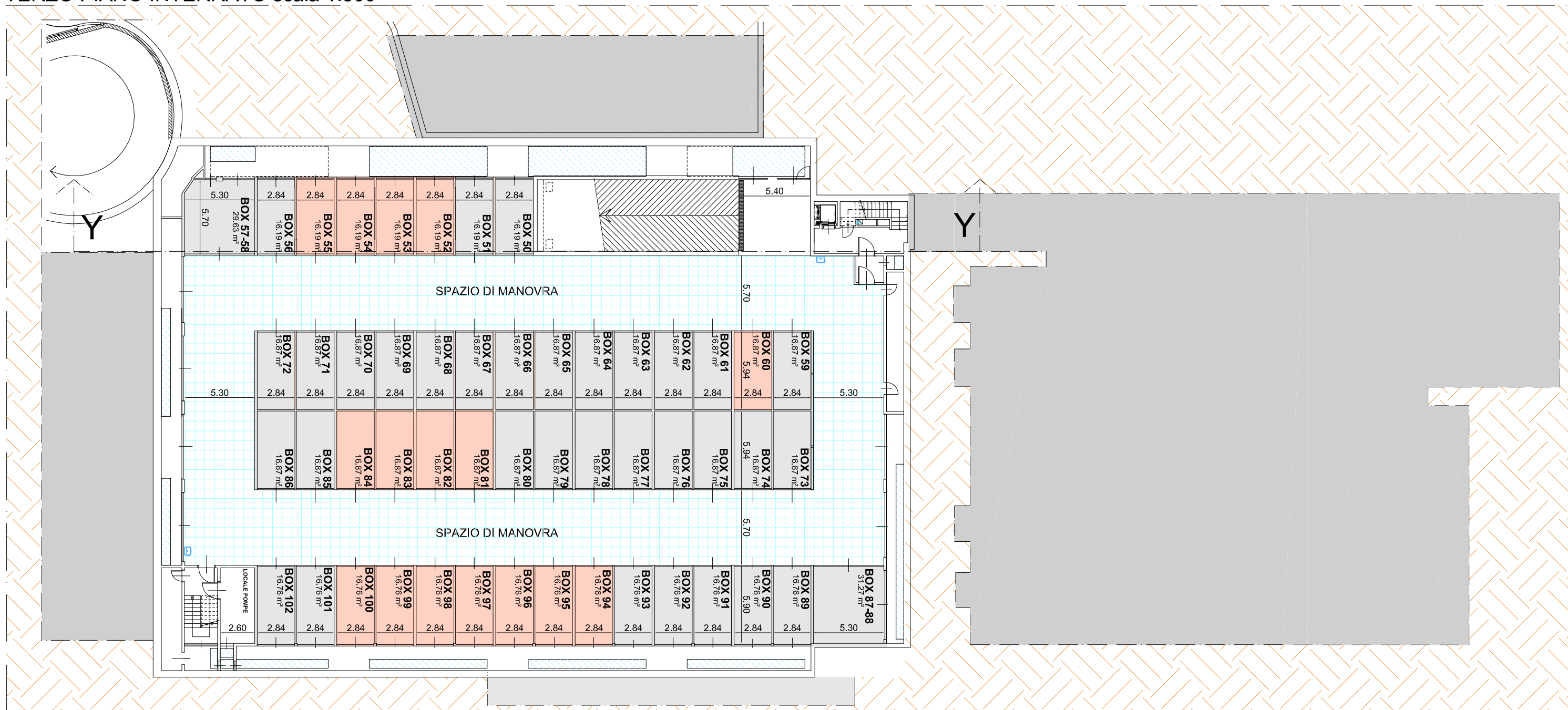
SEZIONE X-X scala 1:300



SECONDO PIANO INTERRATO scala 1:300



TERZO PIANO INTERRATO scala 1:300



SEZIONE Y-Y scala 1:300